

December 1st, 2010

Yin Chang in Disney's Prom movie

by channel.APA

Advertise here

Subscribe



We spotted actress Yin Chang in Disney's Prom movie trailer. You may recognized for her from her role as Nelly Yuki on CW's "Gossip Girl". In the Walt Disney ensemble feature film Prom, she plays one of the leads as a senior in high school, Mei. Here's a synopsis of the film:

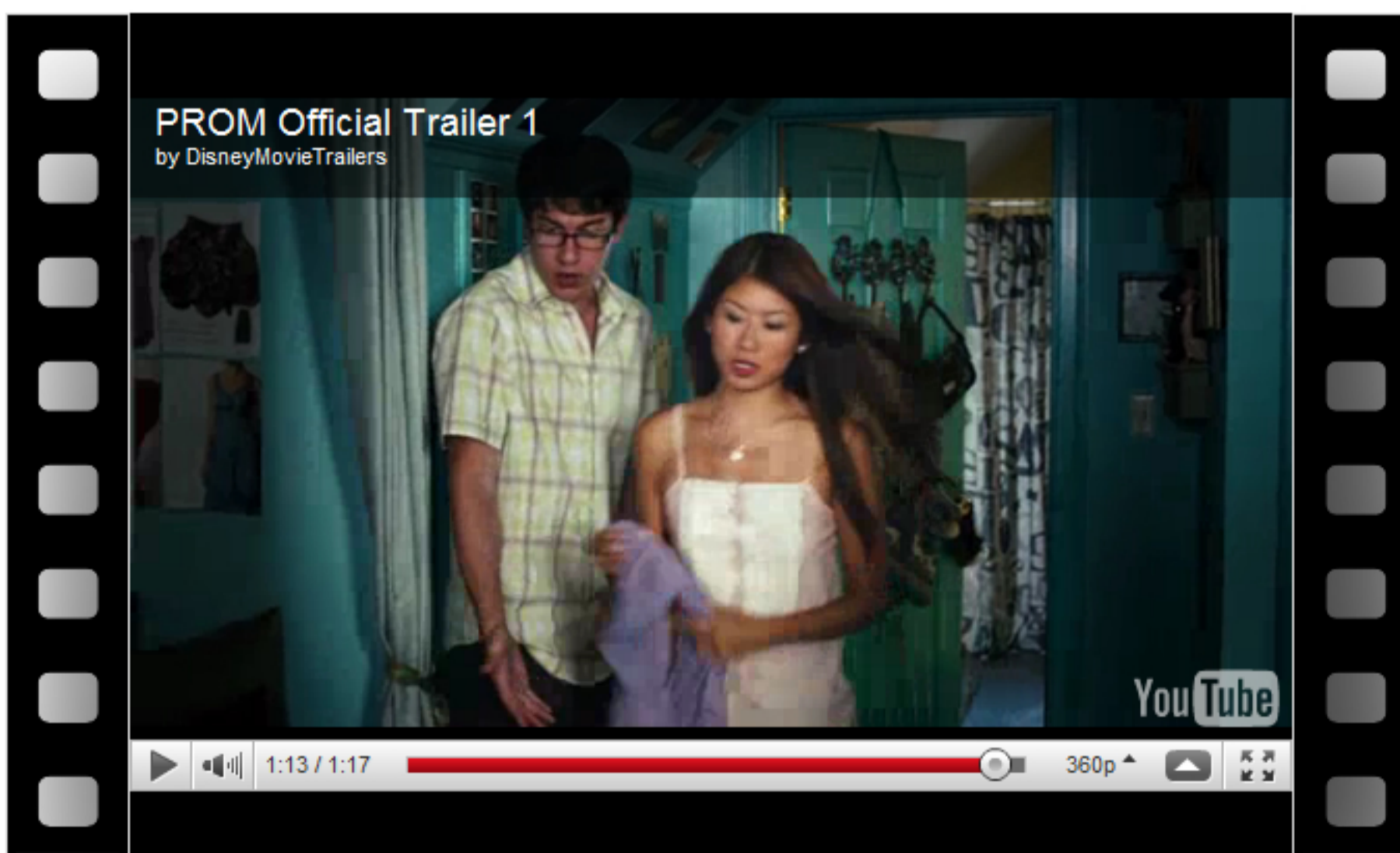
At "Prom," every couple has a story and no two are exactly alike. Several intersecting stories unfold at one high school as the big dance approaches; "Prom" portrays the precarious passage from high school to independence as some relationships unravel and others ignite. For Nova Prescott (Aimee Teegarden), it's a battle of wills as she finds herself drawn to the guy (Thomas McDonell) who gets in the way of her perfect prom. Fellow seniors Mei (Yin Chang) and Tyler (De'Vaughn Nixon) harbor secrets, while others face all the insecurity and anticipation that surrounds one of high school's most seminal events. There are hundreds of nights in high school, but there's only one "Prom." Featuring an emerging ensemble cast and a powerful soundtrack, "Prom" hits theaters April 29, 2011.

Supposedly, it's reminiscent of the John Hughes and Cameron Crowe classics ('Breakfast Club', 'Say Anything', 'Pretty In Pink'). It's a modern twist on the 80's classics. Whatever you do, don't get your prom dress at the Ghetto Prom Emporium.

Yin Chang talks about her character Mei Kwan



Prom Trailer



More about Yin Chang

Yin Chang, born and raised in New York, is the eldest of three daughters. She is of Taiwanese and Chinese, Malaysian ancestry. As selected by NYLON Magazine, she was featured in their 2009 "Young Hollywood" issue as one of the 45 stars of the next generation. She was also noted as one of the 14 rising young stars of the "Young Hollywood Generation 2009" by Hudson Jeans.

Chang writes during her free time with plans of publishing novels, memoirs and children's books in the future. She hopes to write scripts one day and see her finished work come alive on screen. Her artistic endeavors are inspired and encouraged by her maternal grandfather, the highly respected and world-renowned artist Dr. Teng Beng Chew. According to Chang, she considers herself to be a family oriented person, "I have a large but very close knit family; we're the Asian version of My Big Fat Greek Wedding. I love spending time with them." Until recently starting her professional acting career, Chang has spent all her vacations traveling around the world with her family and relatives.